



Wireless & Handheld Mobile Ultrasound Scanner



TAIWAN
EXCELLENCE
2021

1/2

LeSONO




	LU700L	LU710L	LU710LH	LU700C / LU710C	LU710M	LU710PA	LU710E
Frequency Bandwidth	5 - 10.0 MHz	4.2 - 12.5 MHz	4.0 - 17.0 MHz	1.3 - 5.0 MHz	2.8 - 8.3 MHz	1.3 - 2.4 MHz	2.8 - 8.3 MHz
Max Depth	12.6 cm	12.6 cm	12.6 cm	25.2 cm	12.6 cm	25.2 cm	12.6 cm
Field of View	-	-	-	60°	100°	90°	151°
Clinical Applications	Can be customized in app						
	<ul style="list-style-type: none"> Breast Carotid MSK Peripheral Vessels Superficial Superficial Mirror Thyroid 	<ul style="list-style-type: none"> Breast Carotid MSK Ocular Peripheral Vessels Superficial Superficial Mirror Thyroid 	<ul style="list-style-type: none"> Breast Carotid MSK Ocular Peripheral Vessels Superficial Superficial Mirror Thyroid 	<ul style="list-style-type: none"> Abdomen Abdomen Difficult Bladder Meas. FAST GYN OB Early OB Mid Late Renal Spleen 	<ul style="list-style-type: none"> Abdomen Abdomen Difficult 	<ul style="list-style-type: none"> Abdomen Cardiac 	<ul style="list-style-type: none"> OB Early Pelvis Urology
Wi-Fi	802.11 a/b/g/n						
Modes	B-Mode, M-Mode, Color Doppler*, PW*, Power Doppler*						
DICOM	DICOM 3.0*						
Battery Working Time	Up to 4 hours						
Operating System							

(*optional)

- This product, features, options, and transducers are not commercially available in all countries.
- Sales and Shipments are effective only after the approval by the regulatory affairs. Please contact your local sales representative for further details.

2/2



Unleash your vision

Reliable image for every moment.



Scanning with Continuous Power in Hand

Up to 4 hours battery life under active usage



Uncompromising Image Quality

Benchmarked against cart-based ultrasound with proprietary algorithm and beamform technology



Fast Connection on Android & iOS, DICOM 3.0 Supported

- App-based ultrasound without additional subscription
- DICOM 3.0 system supported and smoothly integrated with PACS/HIS*



Imaging Parameters & Presets Customized for Clinicians

- 30+ imaging parameters can be customized by users
- 15+ presets for quick and easy start. The user can also create their own custom presets



Reliable Clinical Auto-measurement

Easy auto-measure tools for obstetrics and cardiology, providing useful estimation for diagnosis

Full scanning mode for diverse diagnostic condition

LeSONO supports B mode, M mode, Color Doppler, Power Doppler and Pulsed Wave mode.



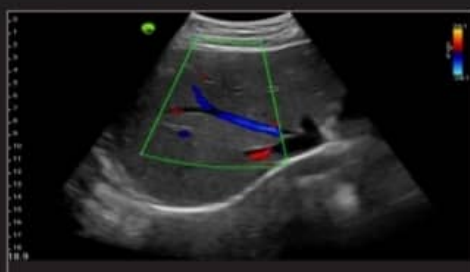
Liver transverse, B mode



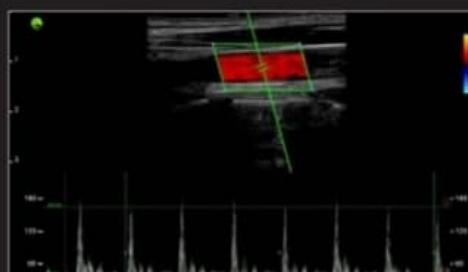
Gallbladder, B mode



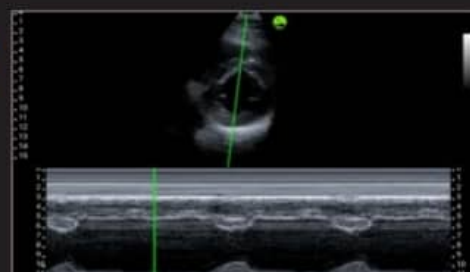
Heart, B mode



Liver, Color doppler



Carotid, Pulsed wave



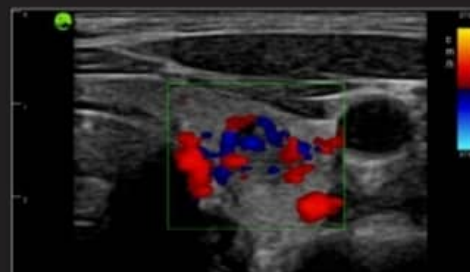
Heart, M mode



Kidney, Color doppler



Kidney, Power doppler



Thyroid gland, Color doppler



LEL TEK

6F-3., No.293, Sec. 1, Beixin Rd., Xindian
Dist., New Taipei City 231634, Taiwan

تهران، خیابان بهشتی، خیابان مفتح،، خیابان نقدی پلاک ۱۸، واحد ۳

۸۸۵۵۹۱۷۵، ۸۸۵۵۹۱۷۸، ۸۸۵۵۹۳۵۴

تهران، خیابان میر عماد، کوچه دوم، پلاک ۱۸، طبقه ۳، واحد ۶

۸۸۵۵۹۳۰۶، ۸۸۵۵۹۳۰۷، ۸۸۵۵۹۳۰۸



SHEPCo BME